

ANATOMY ACTS

Biological Branches



fig 1

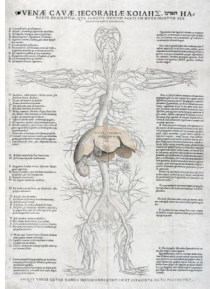


fig 2



fig 3

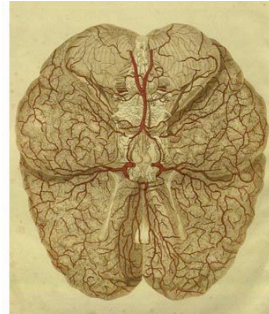


fig 4

In 'Anatomy Acts' Christine Borland's artwork makes reference to the similarities between the human body and other natural forms and celebrates the links between art and science.

In the human body and in nature patterns are replicated on a small and a large scale. A good example to use is trees as the 'veins' on leaves echo the shapes of the fully formed tree.

- Choose a photograph of a tree and make a drawing in ink on A2 cartridge paper using a twig. Try to pay particular attention to the 'branching' out of lines. Having limited control of the media will encourage a natural line. Allow mistakes to happen and adapt your approach accordingly.
- Choose a number of leaves and make prints using natural colours on a sheet of paper. Use this and work on top with graphite stick to produce a detailed large scale drawing of one of the leaves.
- Use different thicknesses of wire and try to replicate 'branching' in three dimensional form. Take photographs of the resulting sculpture and make drawings from different angles.
- Use an anatomy book and exhibits from 'Anatomy Acts' to draw comparisons between images. Consider overlapping, photocopying, tracing etc.

ANATOMY ACTS

fig 1. Anatomy Acts Object Guide No.143

Geburtshilflicher Röntgen Atlas, Tab. 10, pl. 9, Dresden, 1908

G. Leopold and T. Leisewitz Leopold

Courtesy of The Royal College of Surgeons of Edinburgh, RR Q7

fig 2. Anatomy Acts Object Guide No.8

Tabulae anatomicae sex, six plates, 1538

Andreas Vesalius (1514-1564)

Glasgow University Library, Special Collections, Az.1.10

fig 3. Anatomy Acts Object Guide No.16

**Skeleton, brain, nerves from John Banister: Anatomical tables.
Table 5 & 6, c.1580**

Anon.

Glasgow University Library, Special Collections, Ms Hunter 364 (V.1.1)

fig 4. Anatomy Acts Object Guide No.86

**Engravings of the Cardiac Nerves, (Tabulae Neurologica),
Edinburgh, 1832**

Antonio Scarpa (1752-1832)

Special Collections, University of St Andrews, sf QM25.S3E32

Copyright

Images and accompanying text on www.anatomyacts.co.uk can be printed, photocopied, used in digital form for education purposes only. You are not permitted to make any money from these resources or sell any publication or product containing these resources. All copyright remains with the lender. If you require any further information on a particular image or if you would like to find out about obtaining reproduction please contact the lender (see credit accompanying each image).